



# ASANTA MACHINES PVT. LTD.



**MOVING WASTE  
WISELY &  
ORGANICALLY!!**

*EXPLORE OUR RANGE OF CREATIONS*

✉ [sales@asantamachines.com](mailto:sales@asantamachines.com)

☎ +91 9999669976





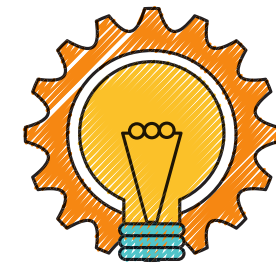
## ABOUT ASANTA MACHINES

Asanta Machines, a reliable name, has transcended quickly to be the leading engineering & manufacturing company. Dedicatedly, we work towards delivering integrated supply, design, project management and installation services for solid waste management, waste incineration, process heating, size reduction, & environment sector. A wide range comprising of equipment, technology and plant are offered by us for different kind of waste management including medical, general, hazardous, e-waste and other municipal solid waste.

## OUR USP



*Reputable Company*



*Innovative Solutions*



*International Standards*



*High Quality Products*



*Satisfied Clientele*



[sales@asantamachines.com](mailto:sales@asantamachines.com)



+91 9999669976



# INTRODUCTION

The recycling of paper is the process by which waste paper is turned into new paper products. It has a number of important benefits besides saving trees from being cut down. It is less energy and water-intensive than paper made from wood pulp.

## USE OF PAPER RECYCLING

The recycling of paper is the process by which waste paper is turned into new paper products.

## BENEFITS OF PAPER RECYCLING

- Environmental awareness.
- Recycling paper includes saving energy, water, and landfill space.
- Consists of only physical processes.
- No de-inking or use of chemicals.
- Paper recycling reduces greenhouse gas emissions and the recycled fiber is sustainable.
- Simple to use machines and equipment

*Machine ranges from 15kg/day to 5000kg/day*





# WOODCHIPPER MACHINE



## INTRODUCTION

"Asanta Machines Pvt. Ltd." Wood Chipper is designed to take all types of wood log material i.e. hardwood, softwood, etc. The machine is strong enough to go through wet or dry logs tree trunks, logs and turn them into Sawdust/ Wood Chips in one go.

## USE OF WOOD CHIPPER

The machine is used for converting the Wood Logs into wood powder/Wood chips.

## BENEFITS OF WOOD CHIPPER

- Quickly removes the unwanted waste.
- A wood chipper can save time and energy in getting rid of the waste.
- Converts the large chunks of wood into smaller pieces without harming the environment.
- Wood Chipper produce useful materials.

*Machines ranges from 100kg/hr to 30ton/hr*





# SANITARY NAPKIN INCINERATOR



## INTRODUCTION

"Asanta Machines Pvt. Ltd." Sanitary Napkin Incinerator Machine is designed in such a way to dispose of napkins in an environment-friendly method by burning the pads and converting them into ash. Machines are designed as per user requirements.

## USE OF SANITARY NAPKIN INCINERATOR

Destroys solid sanitary napkins hygienically, Operates on electricity, It can be programmed for cycles/day, Burns napkins completely producing only less than 1 gm of ash per napkin.

## BENEFITS OF SANITARY NAPKIN INCINERATOR

- Complete disposal of used napkins by burning.
- Self-disposal by the user by directly putting into the incinerator.
- Gets rid of the embarrassment of finding out ways to dispose of used napkins.
- Eco-friendly disposal.
- Less than 1 gm of ash per cycle.

*Burns 150 to 200 napkins per day*





# ORGANIC WASTE COMPOST MACHINE



## INTRODUCTION

Our Organic Waste Compost Machine is fully automatic and compact in size, all stainless steel construction, processes all types of Organic and Horticulture waste. It has an inbuilt stainless steel shredder that shreds waste material thereby reducing the decomposition time and enhancing the efficiency and quality of the compost.

## USE OF ORGANIC WASTE COMPOST MACHINE

The machine is used to convert all your organic waste and garden waste into compost.

## BENEFITS OF ORGANIC WASTE COMPOST MACHINE

- It reduces the need for other environmental waste treatment methods.
- It can compost all types of organic waste.
- It has low operating expense.
- It is fully automatic and environment friendly.

*Machines ranges from 25kg/day to 5000kg/day*



# FRUIT/VEGETABLE PULPING MACHINE



## INTRODUCTION

"Asanta Machines Pvt. Ltd." Fruits and Vegetable Pulping Machine with motor is used to extract pulp from fruits, vegetables, and other pulpy items. Our machines are developed using high-grade raw material and modern machinery to ensure that final output meets with industry standards.

## USE OF PULPING MACHINE

It is used to extract pulp from fruits. Fresh fruits are sent into the machine through the feed port and transmitted to the beater by feed blades. The fresh fruits are pounded into pulps by beaters.

## BENEFITS OF PULPING MACHINE

- Good performance at separation from kernel, seed, and skin.
- Served as the important equipment for food processing entities.
- The pulp and residues will separate automatically.
- Time-saving and pulps can be saved for a longer period of time.
- The parts contacting the material are all made of stainless steel, which meets the sanitary condition for food.

*Machine ranges from 100kg/hr to 1000 kg/hr*

# EGG TRAY MACHINE



## INTRODUCTION

"Asanta Machines Pvt. Ltd." Egg Tray making machines lies in turning waste paper into usable and profitable paper pulp molded products. This model is highly suitable for high volume production of egg trays, fruit trays etc. This machine is fitted with indexing mechanism to ensure optimum performance levels.

## USE OF EGG TRAY MACHINE

It can be used for a profitable business to make useful egg trays.

## BENEFITS OF EGG TRAY MACHINE

- Paper egg tray is environmental friendly and can be recycling
- Turns waste paper into profitable pulp molded products.
- IT reduces pollution to the environment.
- It is a rich resource for low-cost paper waste

*Machine ranges from 700 trays/hour to 3000 trays per hour*





***Asanta Machines Pvt. Ltd.***

**Contact Us:**



**+91 9999669976**



**[www.asantamachines.com](http://www.asantamachines.com)**



**J 1/23 GF DDA Flats Kalkaji**